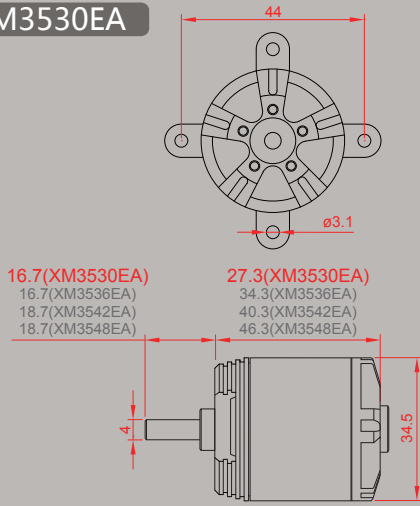
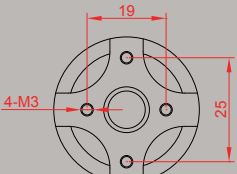


Dimensions

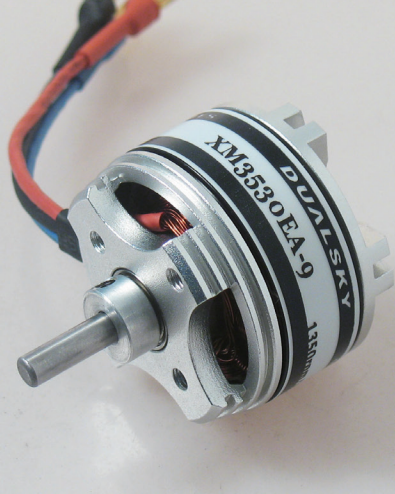
XM3530EA



36.3(XM3530EA)
43.3(XM3536EA)
49.3(XM3542EA)
55.3(XM3548EA)



XM35EA



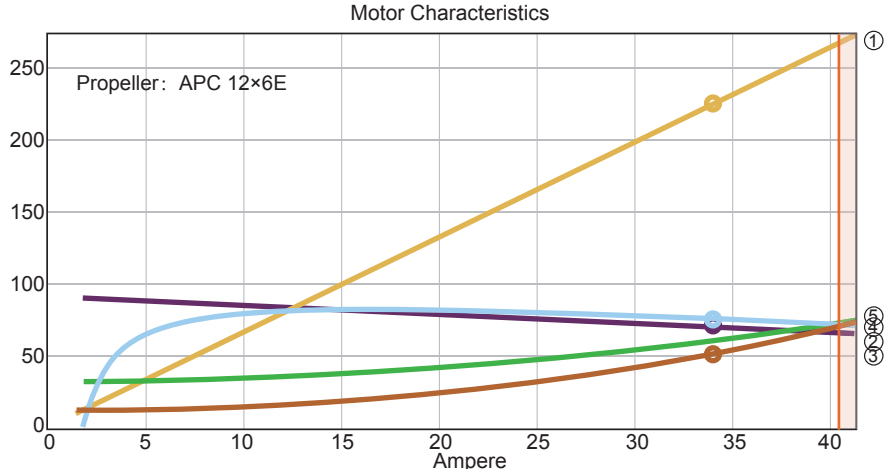
Specification

Xmotor EA Brushless outrunner	XM3530EA-9	XM3530EA-10	XM3530EA-12	XM3530EA-13
Item NO. (商品编码)	55671	55672	55673	55674
RPM/V (KV) (KV值)	1355	1220	1020	930
Alias(Stator diameter, Magnet length) (定子直径, 磁铁长度)	2808	2808	2808	2808
Weight(g) (重量)	73	74	74	72
Diameter(mm) (直径)	34.5	34.5	34.5	34.5
Length(mm) (长度)	27	27	28	27
Diameter of Shaft(mm) (轴径)	4.0	4.0	4.0	4.0
Mounting holes pitch(mm) (安装孔距)	19/25	19/25	19/25	19/25
Slots,Poles (极数)	12,14	12,14	12,14	12,14
Idle Current(Io) @10V(A) (空载电流)	2.1	1.9	1.4	1.2
Resistance(Ri)(mOhm) (电阻)	39	44	54	71
Cruising power(W)[8 mins] (巡航功率)	149	143	131	116
Bursts current(A)[15s] (最大电流)	24.3	23.4	21.5	18.9
Peak power(W)[15s] (峰值功率)	270	260	239	210
Recommended ESC (推荐调速器)	XC2512BA	XC2512BA	XC2512BA	XC2512BA
Setup 1(No. of Cell, Prop.) (配置1)	2S, 12x6	2S, 13x6	3S, 11x5	3S, 12x6
Setup 2(No. of Cell, Prop.) (配置1)	3S, 10x5	3S, 10x5	N/A	N/A
Max. weight of sport models(kg) (适用的运动型飞机最大重量)	0.74	0.71	0.66	0.58
Max. weight of 3D models(kg) (适用的3D机最大重量)	0.50	0.48	0.44	0.39
Memo (备注)	480 class High torque			

XM3530EA-9 (1355KV)

Motor @ Optimum Efficiency
最佳效率

Current(电流):	16.29A
Voltage(电压):	6.83V
Revolutions(转速):	8142rpm
electric Power(输入功率):	111.3W
mech. Power(输出功率):	91.4W
Efficiency(效率):	82.1%



Propeller 螺旋桨	Thrust 拉力	Ampere 电流	Watt 功率	g/W 效率	RPM 转速
Motor @ Maximum , 11.1V (3S Lipo)					
APC 9x4.5E	1286g	25.63	261.0	4.9	12070
*APC 10x5E	1732g	36.94	372	4.7	11345
7.4V (2S Lipo)					
APC 10x6E	987g	21.58	146.5	6.7	7818
APC 11x5.5E	1117g	26.29	177.5	6.3	7529
APC 11x7E	1323g	30.62	205.7	6.4	7263
APC 12x6E	1380g	34.37	230.0	6.0	7033

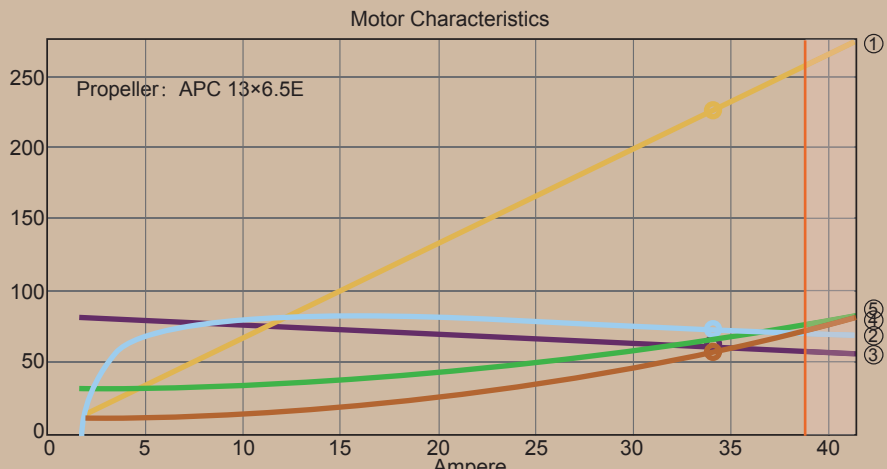
- ① el.Power [in 1W]
- ② Efficiency [%]
- ③ max. Revolutions [in 100rpm]
- ④ waste Power[W]
- ⑤ Motor Case Temp. [°C]

* 超限 Over load

XM3530EA-10 (1220KV)

Motor @ Optimum Efficiency
最佳效率

Current(电流):	14.77A
Voltage(电压):	6.84V
Revolutions(转速):	7328rpm
electric Power(输入功率):	101.1W
mech. Power(输出功率):	82.7W
Efficiency(效率):	81.8%



Propeller 螺旋桨	Thrust 拉力	Ampere 电流	Watt 功率	g/W 效率	RPM 转速
Motor @ Maximum , 11.1V (3S Lipo)					
APC 9x6E	1370g	24.46	249.4	3.2	10790
*APC 10x5E	1485g	29.94	293.8	5.1	10505
7.4V (2S Lipo)					
APC 11x7E	1143g	24.20	163.8	7.0	6751
APC 12x6E	1200g	27.35	184.5	6.5	6559
APC 13x6.5E	1439g	34.53	231.0	6.2	6119

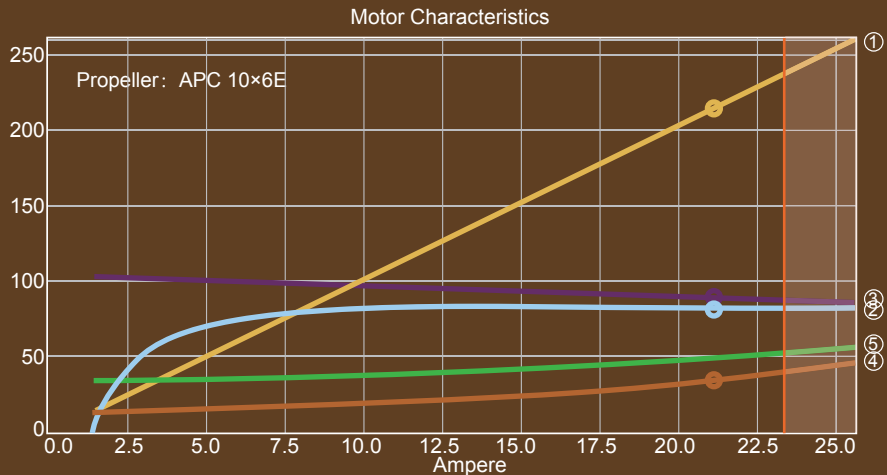
- ① el.Power [in 1W]
- ② Efficiency [%]
- ③ max. Revolutions [in 100rpm]
- ④ waste Power[W]
- ⑤ Motor Case Temp. [°C]

* 超限 Over load

XM3530EA-12 (1020KV)

Motor @ Optimum Efficiency
最佳效率

Current(电流):	15.99A
Voltage(电压):	10.28V
Revolutions(转速):	9314rpm
electric Power(输入功率):	164.3W
mech. Power(输出功率):	137.9W
Efficiency(效率):	83.9%



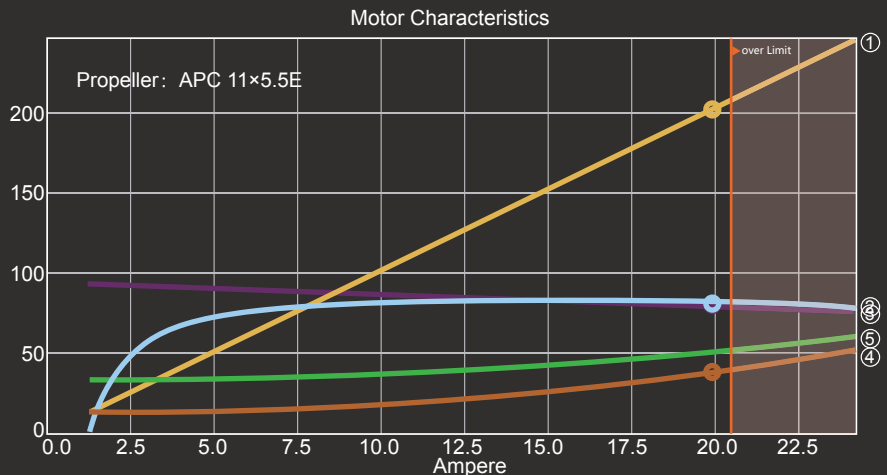
Propeller 螺旋桨	Thrust 拉力	Ampere 电流	Watt 功率	g/W 效率	RPM 转速
Motor @ Maximum , 11.1V (3S Lipo)					
APC 9x4.7SF	830g	13.24	136.4	6.1	9488
APC 9x6E	1026g	15.62	160.6	3.7	9337
APC 10x4.7SF	1064g	18.21	186.8	5.7	9174
APC 10x5E	1125g	18.68	191.5	5.9	9144
APC 10x6E	1301g	21.33	218.1	6.0	8977

- ① el.Power [in 1W]
- ② Efficiency [%]
- ③ max. Revolutions [in 100rpm]
- ④ waste Power[W]
- ⑤ Motor Case Temp. [°C]

XM3530EA-13 (930KV)

Motor @ Optimum Efficiency
最佳效率

Current(电流):	12.95A
Voltage(电压):	10.31V
Revolutions(转速):	8469rpm
electric Power(输入功率):	133.4W
mech. Power(输出功率):	110.7W
Efficiency(效率):	82.9%



Propeller 螺旋桨	Thrust 拉力	Ampere 电流	Watt 功率	g/W 效率	RPM 转速
Motor @ Maximum ,14.8V (4S Lipo)					
APC 8x4E	765g	10.25	141.3	5.4	11784
11.1V (3S Lipo)					
APC 10x4.7SF	890g	14.02	144.3	6.2	8391
APC 10x5E	941g	14.38	148	6.4	8364
APC 10x6E	1090g	16.42	168.7	6.5	8216
APC 11x5.5E	1242g	20.17	206.5	6.0	7942

- ① el.Power [in 1W]
- ② Efficiency [%]
- ③ max. Revolutions [in 100rpm]
- ④ waste Power[W]
- ⑤ Motor Case Temp. [°C]

* 超限 Over Limit